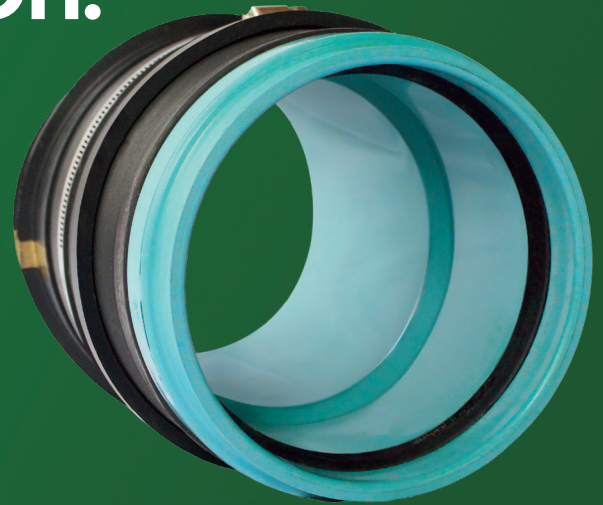


Connect and Carry On.



ADS® Inserta Tee® OneFit

When it comes to versatility, ease of installation and testing, the Inserta Tee® OneFit is a lateral service connection unlike any other.

Inserta Tee OneFit is designed for new, rehabilitation and repair installations and provides:



Accepted

Inserta Tee OneFit is accepted by thousands of municipalities and engineers.



Adaptable

Fits common types of mainline pipes over 10" in diameter.



Quick installation

Eliminates glues, epoxies, grout, tightening and retightening of bands.

| | Inserta Tee® One Fit | Rubber Saddle Tee | Saddle | Other Product |
|-----------------------|--------------------------------------------------------------------------------------------------------------------------------------------------------------------------------------------------------------------------------------------------------------|-----------------------------------------------------------------------------------------------------------------------------------------------------------------------------------------------------------------------------------------------------------------|---------------------------------------------------------------------------------------------------------------------------------------------------------------------------------------------------------------------------------------------------------------------------------------|--------------------------------------------------------------------------------------------------------------------------------------------------|
| Testing | Air testable in most pipes; meets the testing requirements of ASTM D3212 at 10.8 psi (75 kPa). Field testable to ASTM F2487, C969, and F1417 | Test information limited and does not meet ASTM D3212 at 10.8 psi (75 kPa). | Test information limited and does not meet ASTM D3212 at 10.8 psi (75 kPa). | Test information limited and does not meet ASTM D3212 at 10.8 psi (75 kPa). |
| Installation | Fast, effective, and easy to install. Installation instructions ensure coring the perfect hole. Minimum protrusion will not interfere with post-installation inspection. No straps or bands to re-tighten. No need to disturb backfill around the host pipe. | No installation instructions on how to core the hole. Bands need to be installed around the host pipe and need to be re-tightened after 15 minutes. Backfill must be removed completely around the host pipe. Cannot be used on corrugated or ribbed host pipe. | Specific diameter hole required to keep boot from collapsing into the host pipe. Bands and straps must be tightened to specific torque and re-tightened after 15 minutes. Backfill must be removed completely around the host pipe. Cannot be used on corrugated or ribbed host pipe. | No installation instructions on how to cut the hole. Protrusion into mainline will interfere with post-installation video equipment or mandrels. |
| Mainline Adaptability | Will fit all common types and diameters of mainline pipe. | Limited to smooth exterior wall mainline pipes. | Limited to smooth exterior wall mainline pipes. | Limited mainline pipe types and diameters. |
| Lateral Connection | Bell connections to fit all common lateral pipe types. | Limited lateral sizes and types. | Limited lateral sizes and types. | Limited lateral sizes and types. |

Contact your local sales representative for acceptable watertight applications. Not all applications are standard and some may require additional technical assistance.

Ready to connect?

Want to find out more about the innovative and versatile Inserta Tee OneFit? Contact us at 503-357-2110 or by visiting ADSOneFit.com.

